

## Brain Tumor Detection using Edge Detection Method and Calculation of Tumor Area

Sangeeta<sup>1</sup>, Dr. Nagendra H.<sup>2</sup>

Electronics and communication engineering, PDA College of engineering, Kalaburagi, Karnataka, India

Associate professor, Electronics and communication engineering, PDA College of engineering, Kalaburagi, Karnataka, India

**Abstract**— The central control unit of human body is brain. The tumor is not diagnosed in early stage then it affects the brain means it causes the death of the patient. Magnetic Resonance Image (MRI) doesn't produce any harmful radiation and it is a better method for area calculation as well as classification based on the grade of the tumor. Nowadays there exists no automatic system to detect and identify the grade of the tumor. This paper proposes brain tumor classification which is divided into four phases as pre-processing, segmentation, feature reduction and extraction, classification. Segmentation of brain Tumor is a one of the basic steps in detection and classification of tumor. Gaussian filter is used to eliminate the noise and canny edge detector is used to detect the tumor area and calculation of tumor area. The K means cluster is used to segment the brain tumour. DWT (Discrete wavelet transform) and GLCM (Grey Level co-occurrence matrix) used for transform and spatial feature extraction and PCA (Principal component analysis) reduces the feature vector to maintain the classification accuracy of brain MRI images. For the performance of MRIs classification, the significant features have been submitted to KSVM (kernel support vector machine). The proposed system will reduce processing time and better accuracy can be achieved. The proposed method is validated on BRATS 2015 dataset.

**Keywords**— Gaussian filter, Canny edge detector, DWT, PCA, GLCM, Segmentation, MRI image, tumor detection, SVM.

### I. INTRODUCTION

The brain tumor means formation of abnormal cells in the brain. There are two main kinds of tumor those are Benign and malignant. The benign tumor is also called primary tumor and malignant tumor is called secondary tumor. The American Brain Tumor Association and World Health Organization consider the tumor in four grades those are grade I and grade II and are also known as low-grade tumors and grade III and grade IV and are called high-grade tumors. The low-grade tumors are also called benign tumor which grow slowly and the high-grade tumors are also called malignant which grow rapidly [2]. It is significant to detect brain tumor at the early stage and it is necessary to identify the tumor area and segment the tumor images.

Computed Tomography (CT), Single-Photon Emission Computed Tomography (SPECT), Positron Emission Tomography (PET), Magnetic Resonance Spectroscopy (MRS) and Magnetic Resonance Imaging (MRI) are Medical Imaging techniques. These techniques provide valuable

information about shape, size, location and metabolism of brain tumors assisting in diagnosis. Magnetic resonance imaging (MRI) and computed tomography (CT) scans are two diagnostic modes which show the internal structure of the brain. Operator performance causes noise in MRI images and this noise leads to inaccuracies classification. MRI is considered as the standard technique due to its high-quality soft tissue contrast resolution and, image manipulation, uses non-ionizing radiation and multi plane imaging technique.[12]

During image acquisition, coding and transmission the noise is always present in digital images. So, in image processing filter methods are mainly used to suppress either the high frequencies in the image means smoothing the image or low frequencies in the image means detecting the edges in the image. There are different types of image noise filtering methods in image processing those are Median filter, mean filter, bilateral filter, weiner filter, Anisotropic filter and Gaussian filter. If salt and pepper noise is present in image then median filter is good

methods, poisson noise is present in image then mean filter is good method and speckle noise is present in image then weiner filter method is good. [19]. Averaging filter gives the good result by computing MSE. Median filter removes the noise based on PSNR [10]. A Gaussian filtering is applied. It is a linear filter and it is used to blur the image or to reduce noise as well as for edge detection or enhance the boundaries of the object. It is not easy to detect and classify the brain tumors. Due to the misplaced edges, noise, low contrast of medical images it is hard to get information from these images [18]. It includes few processes, such as image segmentation, enhancement, feature selection and extraction, feature classification and reduction.

Image segmentation is partitioning a brain image into multiple segments which are uniform and homogenous with respect to some characteristics such as colour, intensity or texture. Segmentation techniques are threshold method, edge-based segmentation, region-based segmentation, clustering based segmentation, watershed-based segmentation and artificial neural network based segmentation.

Clustering is grouping similar data together and reduces data dimension and it learns the shape of dataset by repeatedly moving its neurons closer to the data points. Clustering methods are k-mean clustering, improved k-mean clustering, Fuzzy C-mean and improved Fuzzy C-mean clustering. In K-means, data will be included in one particular cluster. In FCM, data can be included in all existing clusters, but with varying degrees of membership in a range of values [01]. the execution time is less in K-Means compared to Fuzzy C Means clustering technique, because the number of iterations of K-Means is less than Fuzzy C Means clustering[3]. Clustering is one of the unsupervised segmentation methods. K-means and Fuzzy C-means algorithm are two mostly used clustering techniques. K-means clustering is an effective way that uses a fixed number of clusters prior to classify a set of data [16].

The feature extraction can be done by using Gray Level Co-occurrence Matrix (GLCM) and Discrete wavelet transform (DWT). Spatial feature extraction can be done by using GLCM and

transform feature extraction can be done by DWT. The high dimensional space patterns can be made by statistical method known as principal component analysis (PCA). The multidimensionality and number of variables can be reduced by PCA and it enables the exploring of data in an easy way [20]. The classifier on the basis of machine learning comprising of supervised and unsupervised learning has become popular in recent years. K-NN, SVM and ANN are included in supervised learning. Self-organization feature map (SOFM) and fuzzy c-means are included in unsupervised [4]. The advantageous features of SVM are regularization, low test error rate, kernel trick and absence of local minima.

The tumor classification and detection has been done by employing various techniques till now. But these techniques have drawbacks such as lack of accuracy, intensity inhomogeneity, noise, time complexity, computational complexity, feature selection, extraction and reduction, etc. DWT with KSVM classifier is proposed to overcome these limitations and also classification of the tumor is done with high accuracy by using this classifier, which denoising and segment the image, extract and reduce the feature, select the proper features for accurate classification of the tumor as benign and malignant tumor from MRI image. The international Association of cancer registries (IARC) reported that brain tumor cases in India in this is 24,530 (13,840 men and 10,690 women) and 3,08,102 (1,68,346 male cases and 1,32,414 female cases) in worldwide.

## **II. LITERATURE SURVEY**

**Zhang &Gunturk et al. [20]** They proposed optimal bilateral filter to denoise the MRI image. This filter is an expansion of the bilateral filter: multi resolution bilateral filter that is used for the approximation sub bands of a signal disintegrated employing a wavelet filter bank. The wavelet thresholding is merged with multi resolution bilateral filter to create a novel image denoising frame work that is found to be very efficient in reducing the noise is truly noisy images.

**Wang and Li et al. [21]** Proposed a fresh algorithm with novel median filter has two

important steps. First, fuzzy logic theory and fuzzy gradient values are used for detecting the impulse noise, and thereafter, a noise label matrix is formed. Second, the noise label matrix is scanned. Finally, the area of the minimum pixel of the weighted difference matrix is returned by means of linear comparisons, and thereafter the intensity of the noise point is replaced with the Gray value present in the area. The obtained result shown that the newly proposed filter performs better than several well-known switching median-based filters with respect to both noise removal and preservation of details.

**Jain and karaulia et al. [22]** They proposed Gabor filtering and seeded region growing algorithm for segmentation and median filter is used to denoise the CT and MRI images. The newly introduced technique gives promising results for detecting the stroke and it is also established that MRI imaging offer superior results compared to CT imaging in the detection of stroke.

**Sulaiman et al. [23]** They proposed switching based clustering algorithm for noise elimination. The MRI image differs between 5% and 20% if density noise is present. Qualitative and quantitative evaluations have revealed superior results for the proposed switching based clustering algorithm.

**Lin et al. [24]** Proposed block based adaptive median filter to remove the impulse noise from MRI image. This filter divides the image into multiple sub images and computes the standard deviation for every sub image. The result from the experiment shows that the newly introduced filter can help in maintaining the actual image information with efficiency with effective minimization of impulse noise.

**Vega et al. [25]** Proposed method for removal for the wavelet coefficients associated with the structures, when efficiently eliminating the noisy ones. They compared the results with wavelet, wiener, wavelet base wiener and non-local mean filtering methods and the measurement of the quality of the output images is carried out with the statistical quantity measures like PSNR, MSE and SNR.

**Jain et al. [26]** Proposed fuzzy switching median (FSM) filtering to remove the impulse noise present in the digital images. This algorithm has two phase the first phase is utilized for detecting the impulse noise employing clustered based technique that operates as impulse noise detector. The second phase is filtering phase that carries out the replacement of the noise pixel detected, that in turn, also consists of fuzzy reasoning to address the uncertainties existing in local information FSM, and has the capability of filtering out all kinds of impulse noises.

**Isa et al. [27]** Proposed three filtering methods those are median filtering (MF), adaptive filtering (ADF) and average filtering (AVF), which are exploited for removing the additive noises that exist in the MRI images. The comparison of these filters is done with the statistical parameters like MSE and PSNR and the comparison results shows that MF and AVF generates positive denoising results.

**Anish and venugopala Krishnan [28]** Proposed kernel, Sobel and low pass filter (KSL) to remove the noises from MRI image samples. The kernel filter is applied to the MRI brain image and kernel matrix is used on every pixel in the image. KSL algorithm is used to extracted MRI data for removing the noise and preserving the integrity of the fine medical image structure.

**Ali [29]** proposed several filtering methods like MF, AMF and AVF algorithms for noise removal like salt and pepper noise and gaussian noise. These filters are used to remove the additive noise present in the MRI images and these filters performance is identified by conducting a comparison study that uses mathematical parameters like PSNR.

**Rashid et al. [30]** Proposed Support Vector Machine (SVM) classifier for of brain tumor segmentation. Anisotropic filtering is used to remove noise and SVM classifier for segmentation and morphological operations for separating the affected area from normal and they achieved 83% accuracy in segmentation.

**Hemanth et al., [31]** Proposed Convolutional neural network for classification of brain tumor. For denoising the MRI image, they applied Average and Bilateral Filtering methods and for

Segmentation, pixel-based segmentation is used and PSNR, MEAN, Entropy, standard deviations are selected for machine learning model. They achieved 91% of classification accuracy by using CNN classification method.

**Saurabh Kumar et al. [32]** Proposed Support Vector Machine (SVM) classification for of brain tumor. The MRI images denoised by using Gaussian filter method and segmentation is done by Self-Organized Mapping method. They collected MRI dataset from Digital imaging and communications in medicine and they achieved 97% of accuracy.

**Chong Zhang et al. [33]** Proposed K-means clustering to segment the brain tumor. Adaptive Wiener filtering is utilized for denoising, and morphological operations are used for removing nonbrain tissue, effectively reducing the method's sensitivity to noise. Secondly, K-means++ clustering is combined with the Gaussian kernel-based fuzzy C-means algorithm to segment images. This clustering not only improves the algorithm's stability, but also reduces the sensitivity of clustering parameters. Finally, the extracted tumor images are postprocessed using morphological operations and median filtering to obtain accurate representations of brain tumors.

**Hüseyin Kiraz et al. [34]** Proposed KNN (K Nearest Neighbours) Algorithms for classification of tumor. For noise removing of preserving edges Bilateral Filtering is used and for sharpening High-pass filtering is used. Segmentation of tumor is done by using Thresholding Segmentation ant they collected 50 MRI images which is publicly available dataset. They achieved 89.9% classification accuracy by using KNN.

**Doshi Jeel Alpeshkumar et al.,[35]** Proposed Convolution Neural Network for classification of brain tumor. The MRI images denoised by using Gaussian blur filter method and segmentation is done by binary thresholding and for features extraction they used morphological operations. They collected 255 brain MRI from it 155 contains tumor and 98 images of healthy brain to train the model from Kaggle Dataset and they achieved 97% classification accuracy by using CNN.

**Toğaçar et al., [36]** Proposed novel convolutional neural network (CNN) model that is combined with the hyper column technique for feature extraction, feature selection is done by using recursive feature elimination (RFE) and SVM is used for classification of brain tumor. They collected 253 images in which 155 images are abnormal and 98 images are normal. Here images are in JPEG format and they achieved 96.77% of accuracy.

**Gokulalakshmi et al.,[37]** Proposed K-means clustering for segmentation, Discrete wavelet transformation (DWT) and gray-level co-occurrence matrix (GLCM) is used for feature extraction, and SVM is used for classification of brain tumor. They collected 750 samples from DICOM dataset and they achieved 93.3% of accuracy.

**Kalaiselvi et al.,[38]** Proposed Convolutional Neural Networks (CNN) for classification. They collected dataset from BRATS 2013 dataset and a clinical dataset collected from The Whole Brain Atlas (WBA), by Women's Hospital, Harvard Medical School, Boston, USA. They used 6 models of CNN and they achieved 96-99% of classification accuracy.

**Kumar et al.,[39]** Proposed adaptive k-nearest neighbor classifier to classify the tumor as normal or abnormal and for segmentation they proposed the optimal possibilistic fuzzy C-means clustering algorithm. They collected 1000 images from BRATS MICCAI brain tumor dataset and another one is publically available dataset images which are collected from internet. They achieved 96.5% classification accuracy ,100% Sensitivity, 93%% of Specificity.

**Amarapur et al., [40]** They proposed Cognition based Modified Level Set Segmentation method for segmentation of brain MRI images and for classification of brain tumor is done by using Adaptive Artificial Neural Network (AANN) classification method. They collected data from BRATS-2015 database and they achieved 98% of classification accuracy.

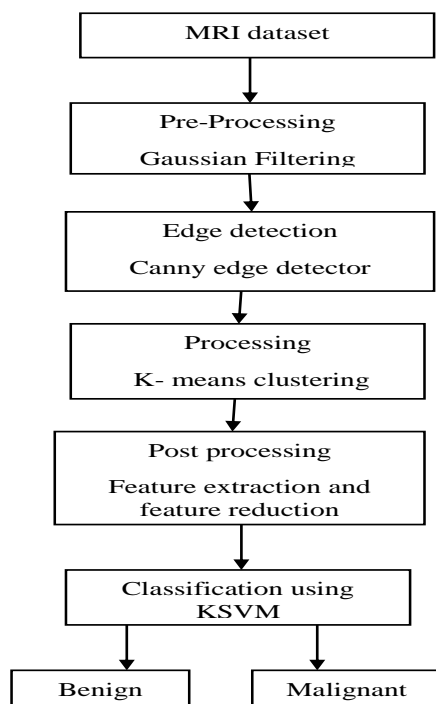
**Bhandari et al., [41]** They proposed convolutional neural networks (CNNs) to segment the brain tumor. They collected training dataset from Multimodal Brain Tumor

Segmentation (BraTS) benchmark and from their own university. They achieved segmentation accuracy from 82 to 89%.

**Abd Alreda et al., [42]** They proposed Feed Forward Back Propagation neural network (FFBPNN) and support vector machine (SVM) for brain tumors classification and Discrete wavelet transform and gray level co- occurrence matrix (GLCM) for feature extraction. They collected 308 images of 83 cases for training and 37 cases for testing from the cancer imaging archive (TCIA) and 59 cases for training and 29 cases for testing

**Ramdas Vankdothu et al.,[44]** proposed recurrent convolutional neural networks (RCNN) classification method to classify brain tumors with low complexity and high accuracy. Pre-processing stage applied adaptive filtering algorithm to denoise the MRI images and Image segmentation is performed using the improved K-means clustering (IKMC) algorithm, and the Gray level co-occurrence matrix (GLCM) is used for feature extraction to extract features and extracted features were applied to RCNN classifier to classify the tumor. They collected the Kaggle dataset with 394 testing sets and 2870 training set MRI images and they achieved 95.17% classification accuracy.

### III.METHODOLOGY



from Harvard medical brain databases and they collected 66 cases for training and 34 cases for testing from General Hospital of Baquba-Iraq of MRI brain images and they achieved 97% of classification accuracy.

**SivaSai et al.,[43]** Proposed Adaptive Bilateral Filter to remove the noise and Fuzzy Recurrent Neural Network (FR-Net) is used for segmentation of brain tumor. They collected 1900 MRI images from Kaggle and they achieved 87.8% of accuracy.

Figure 1: Steps for tumor detection and classification

The analysis of proposed system consists of various steps such as pre-processing, Edge detection, segmentation, feature extraction and classification. In the preprocessing stage, for extracting the noise, Gaussian filter is applied to the image. In the segmentation stage, for the purpose of segmenting tumor, K-means clustering is applied. In the third stage different types of features are extracted. Finally, in the classification stage the type of tumor images can be identified[6].

**1) Dataset:** Collected 250 multi-modality MRI images from BRATS 2015 benchmark and Kaggle dataset. MRI scanned images are either color, Gray-scale or intensity images with size of 220×220. If it is Gray-scale image, a Gray-scale converted image is defined by using a large matrix whose entries are numerical values between 0 and 255, where 0 corresponds to black and 255 corresponds to white. Image segmentation and edge detection is considered as two main stages for brain tumor detection.

#### 2) Pre-Processing

The MRI images are taken as the input image data set in which the MRI image gives detail information about the brain. The input dataset is kept in the form as,  $X = \{x_1, x_2, \dots, x_n\}$ . The images are collected from the BRATS dataset. After preparing the dataset, Preprocessing is the first stage in this system. Magnetic resonance images can be affected by several types of noise and suffer from resolution degradation. [21].

It is the primary stage which is used to remove the unwanted noise from an image like patients name, age, address and other extra details are removed during this process. The image is resized and conversion of RGB to grayscale is performed. Due to thermal effect, there may be noise during MRI scanning, and it is necessary to eliminate this noise.

### 3) Noise removal using Gaussian filter

The gaussian filter blurs the desired area and cuts the noise with higher frequencies. It is a linear filter that remove the gaussian noise and blur the edges effectively. By using gaussian filters (LPF & HPF) the noise present in the input images can be removed. LPF helps out in smoothening of the image and HPF helps out in sharpening of the image. It is a process of weighted average of the entire image, that is, the value of each pixel is obtained by weighted average of itself and other pixel values in the neighbourhood. The essence of filtering is Gaussian Convolution process of normal distribution and image [46]. Gaussian functions are widely used in statistics to describe the normal distributions and hence are often used to represent the probability density function of a normally distributed random variable with expected value  $\sigma^2$ . When working with images we need to use the two-dimensional Gaussian function. The mathematical model of the Gaussian filter is a two-dimensional Gaussian filter function, as shown in below formula:

$$g(x, y) = \frac{1}{2\pi\sigma^2} e^{-\frac{x^2+y^2}{2\sigma^2}}$$

Among them,  $g(x, y)$  is the gray value of the selected pixel  $(x, y)$ ;  $(x, y)$  is the pixel coordinate of the two-dimensional plane;  $x, y$  is the distance between the pixel point  $(x, y)$  and the center point;  $\sigma$  is the standard deviation of Gaussian filtering, which represents the degree of dispersion of data.

### 4) Processing

Image Segmentation is performed by K -means clustering. Selecting proper segmentation method is difficult task because of the great verities of the lesion shapes, sizes, and colors along with different skin types and textures. The

drawback of FCM clustering for image segmentation is that its objective function does not take into consideration any spatial dependence among pixels of image but deals with images the same as separate points. Second drawback of FCM clustering method is that the membership function is mostly decided by  $d(xk, Vi)$ , which measures the similarity between the pixel intensity and the cluster center. Higher membership depends on closer intensity values to the cluster center. Hence membership function is highly sensitive to noise [18].

K-means, as the most famous clustering algorithm, was used for further processing of the binary image and it is an unsupervised iterative clustering technique and it separate the given data into K predefined distinct clusters. The cluster is defined as a collection of data points exhibiting certain similarities Clustering the image means grouping out the pixels depends on some characteristics. In K-means clustering the number of clusters  $k$  has to be defining first. The cluster centers  $k$  has to be chosen randomly. Then distance between these cluster centers and pixels are calculated. Every pixel is individually compared with all cluster centers with the help of distance formula. The pixel is moved to particular cluster which has shortest distance among all. This process is continuous until the clustering criterion converges. The objective function describing k-means clustering can be written as:

$$S = \sum_{b=1}^k \sum_{a=1}^n ||x_a^{(b)} - c_b||^2$$

Where  $||x_a^{(b)} - c_b||^2$  is the predefined distance from data point  $x_a^{(b)}$  and cluster center  $c_b$ .  $S$  is the indicator of the distance of the  $N$  points from their respective cluster centers. Partition the data set by using these following points:

- 1) Each data point belongs to a cluster with the nearest mean.
- 2) Data points belonging to one cluster have high degree of similarity.
- 3) Data points belonging to different clusters have high degree of dissimilarity.

The algorithm steps of k-means clustering can be expressed as:

Step 1:

- 1) Choose the number of clusters 'K'
- 2) Randomly select any 'K' data

Step 2:

- 1) Select cluster centers in such a way that they are as farther as possible from each other.

Step 3:

- 1) Calculate the distance between each data point and each cluster center.
- 2) The distance is calculated either given distance function or by using Euclidean distance formula.

Step 4:

- 1) Assign each data point to some cluster.

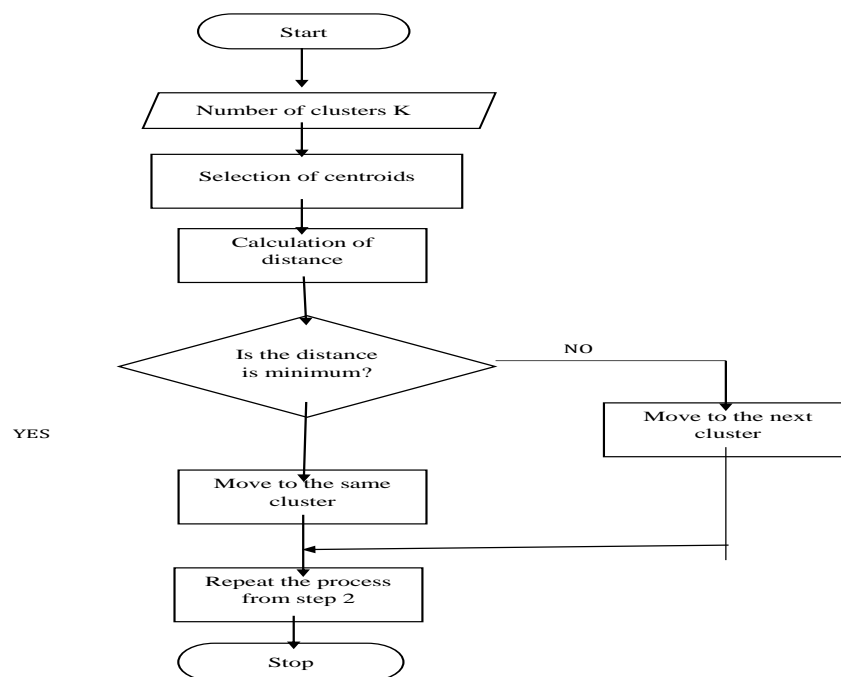
- 2) A data point is assigned to the cluster where center is nearest to that data point.

Step 5:

- 1) Recomputed the center of newly formed clusters.
- 2) The center of a cluster is computed by taking mean of all the data points contained in that cluster.

Step 6:

- 1) Keep repeating the procedure from Step 3 to Step 5 until any of the following stopping criteria is met.
- 2) Center of newly formed clusters do not change
- 3) Data points remain present same cluster.
- 4) Maximum numbers of iterations are reached.



**Figure 2: Flow chart of K means clustering**

#### 4) Post Processing

Post processing employs to main parts: Feature Extraction and Feature Reduction.

##### 4.1 Feature extraction

Feature extraction is process of extracting quantitative information from an image such as color features, texture, shape and contrast. Here we used DWT (discrete wavelet transform) for

transform feature extraction and GLCM (gray-level co-occurrence matrix) for Spatial feature extraction.

##### 4.1.1) Spatial feature extraction using GLCM

GLCM is a statistical method to obtain the relative pixel position of an image. This texture-based feature extraction technique was first introduced by R.M. Haralick. It measures the occurrence of a pixel  $i$  of intensity  $I$  in relation to other pixel  $j$  at a



distance  $d$  and angle  $\theta$ . The total number of occurrences of a pixel  $i$  becomes an element of the GLCM. After calculating GLCM, features are determined from the resultant matrix. In this study, we measured contrast, correlation, energy and homogeneity.

There are two types of features is there

- 1) The Intensity Based Feature
- 2) Texture Based Feature

- 1) The Intensity Based Feature

The intensity-based feature is most commonly used features compared to texture-based features in image processing algorithm. Mean, standard deviation, variance, median, skewness and kurtosis are considered as the intensity-based features. The two dimensional function of the image is denoted by  $f(a,b)$ , intensity level is denoted by  $h(i)$ ,  $N$  is denoted by the total number of gray levels in the entire image and  $p(i)$  denotes the probability density

#### ➤ Mean

Mean is defined as the average level of intensity of image and It clearly shows that the mean is a function probability density.

$$\mu = \sum_{i=0}^{N-1} i \cdot p(i)$$

#### ➤ Standard Deviation

The mean value of the pixels and their probability densities are used to measure the standard deviation

$$\sigma = \sqrt{\sum_{i=0}^{N-1} (i - \mu)^2 \cdot p(i)}$$

#### ➤ Entropy

The uncertainty in the random variable is measured by the entropy. It depends on the probability density  $p(i)$ .

$$En = - \sum_{i=0}^{N-1} p(i) \log_2[p(i)]$$

#### ➤ Variance

The variation in the intensity is measured with the help of variance. It is also calculated by squaring the standard deviation.

$$\sigma^2 = \sum_{i=0}^{N-1} (i - \mu)^2 \cdot p(i)$$

#### ➤ Kurtosis

The histogram flatness is measured by kurtosis and it depends on the standard deviation, mean and probability density.

$$\mu^4 = \sigma^4 \sum_{i=0}^{N-1} ((i - \mu)^4 \cdot p(i)) - 3$$

#### ➤ Skewness

Symmetry of an image is defined by the skewness and It is denoted by  $\mu_3$ .

$$\mu^3 = \sigma^{-3} \sum_{i=0}^{N-1} ((i - \mu)^3 \cdot p(i))$$

- 2) Texture Based Feature

The higher order description of an image is offered by the texture features. It provides the details about spatial distribution of tonal variations or gray tones. The texture -based feature extraction includes the homogeneity and similar regions of an image. The gray matter, white matter, cerebrospinal fluid and tumor region are classified from the MRI by this feature.

#### ➤ Inverse Difference Moment (IDM)

The local homogeneity of an image is calculated by IDM. It takes two images and parameters that specify the viewing condition. IDM is local homogeneity and it is high when local gray level is uniform and inverse GLCM is high.

$$IDM = \sum_{i=0}^{N-1} \sum_{j=0}^{N-1} \frac{1}{1+(i-j)^2} \cdot p(i, j)$$

#### ➤ Contrast

The intensity variation of threshold and its nearest pixel is determined by contrast.

$$Contrast = \sum_{n=0}^{N-1} \sum_{i=0}^{N-1} \sum_{j=0}^{N-1} p(i, j)^2$$

#### ➤ Correlation

It is used to measure the relationship between the threshold and nearest pixel.

$$\text{Correlation} = \frac{1}{\sigma_a \sigma_b} \sum_{i=0}^{N-1} \sum_{j=0}^{N-1} (i, j) p(i, j)^2 - \mu_a \mu_b$$

#### ➤ Energy

Sum squared of GLCM elements. It is also called as angular second moment or uniformity



$$\text{Energy} = \sum_{i=0}^{N-1} \sum_{j=0}^{N-1} p(i, j)^2$$

#### ➤ Homogeneity

Homogeneity is calculated by the energy. It measures the variation in image intensity.

$$\text{Homogeneity} = \sum_{i=0}^{N-1} \sum_{j=0}^{N-1} \frac{p_{i,j}}{1+(i-j)^2}$$

#### 4.1.2) Transform feature extraction using DWT

In this stage, discrete wavelet transform (DWT) technique was applied to the segmented image to extract the features. Here first converting images from the spatial domain to frequency domain. Then actual DWT is performed by filtering the image using two filters those are low pass filter and a high pass filter, in both the vertical and horizontal direction. Here the image is divided into four coefficients: LL, LH, HL and HH in every DWT level. The LL sub-bands come from using the lowpass filter in the horizontal direction and the lowpass filter in vertical direction, and these sub-bands are known as the approximation coefficient. The other sub-bands are known as detailed coefficients and more detailed information is extracted from the tumor using DWT.

#### 4.2). Feature Reduction Using PCA

Extra unnecessary features will increase the classification complexity, require more storage memory and prolong the computational time. Thus, feature reduction is considered as a part of our proposed system. Principal Component Analysis (PCA) is one of the popular methods to reduce the dimensionality of wavelet transform. PCA is used to reduce the dimension of data according to their importance and variance. The PCA method makes the components of the input feature set perpendicular, and then it rearranges them in terms of the highest variation. The component with a low variation in the feature set are removed. PCA allows the identification of standards in data and their expression in such a way that their similarities and differences are emphasized. Once patterns are found, they can be compressed, i.e. their dimensions can be reduced

without much loss of information. Such a reduction is advantageous for image compression, data representation, calculation reduction necessary in subsequent processing, etc.

#### 5) Classification

The original support vector was developed by Vapnik which is a binary classification method to minimize structural risk. SVM is based on supervised techniques which can be used to one-class classification problem to multiple-class classification problem [13]. SVM can be used as a kernel machine. The main impact of kernel trick is that in a transformed feature space kernel allows to fit the maximum-margin hyperplane. A kernel support vector machine (KSVM) was finally applied for MRI classification. There are several families of SVM such as auto scale, box constraint, and kernel. The kernel support vector machine was selected due to its wide range of kernel functions, such as linear, polynomial, and gaussian radial basis function (GRB). In this study, SVM with linear kernel is used to separate the images into two classes. The form of linear function is shown by using the following equations:

$$\alpha(m) = w^T \varphi(m) + c$$

where  $w$ ,  $T$  is the hyper plane parameter and  $\varphi(m)$  function maps the vector  $m$  into higher plane. Training samples are separated by hyper plane using,

$$\alpha(m) = w^T \varphi(m) + c = 0$$

So, based on the high plane two classes are separated.

Performance analysis:

Arrangement, understanding, accuracy of the present system and sensitivity of the model are finding out by using these relations.

1. True positive is at the abnormal condition, it's identified correctly. x True negative is said like normal brain condition, it's identified properly.
2. False negative is at the abnormal brain condition, it's identified properly.

3. False positive is at the normal brain condition, it's identified properly.

These parameters are mainly helped to check the classifier status in the model.

1) Sensitivity= True positive/100 %\*(True positive +FN).

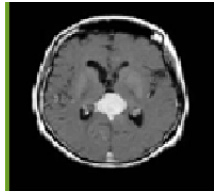
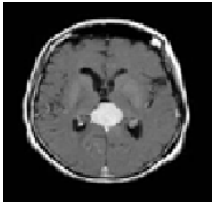
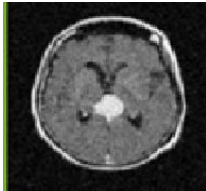

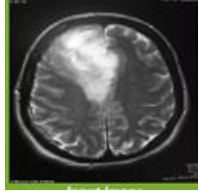
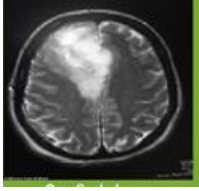
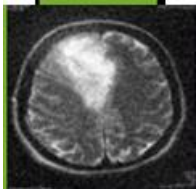



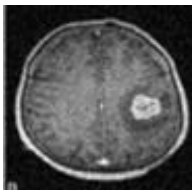
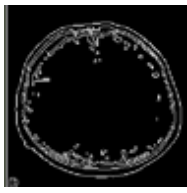
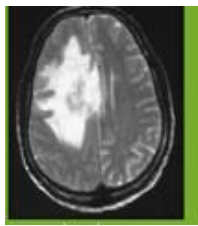
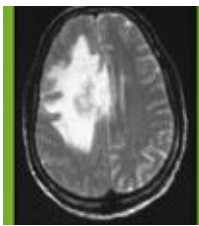
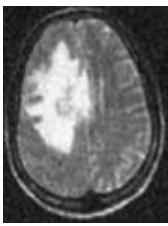

2) Specificity = True negative /100 %\*(True negative +FN).

3) Accuracy=  $\left(\frac{TP+TN}{TP+TN+FP+FN}\right) * 100\%$

## RESULT AND DISCUSSION

The images are collected from two sources namely (1) BRATS 2015 standard database, (2) Kaggle dataset. For these images, various pre-

processing techniques were applied, which includes RGB to gray conversion, filtering using gaussian filtering and edge detection using canny edge detector. Canny Edge Detection algorithm can be used to detect abnormal area within the Gray matter area in a brain, but the lower threshold and the upper threshold has to be determined cautiously to get more accurate result. Few samples of MRI images collected from BRATS 2015 and Kaggle dataset are shown in below figure .The first column of figure represents the original images. The second column represents Gray scale converted images, The third column of figure represents the filtered images using gaussian filter and the fourth column of figure represents the edge detection using canny edge detector algorithm.

Sl.no	Original images	Gray scale converted images	Filtered images	Edge detected image
1				
2				
3				
4				

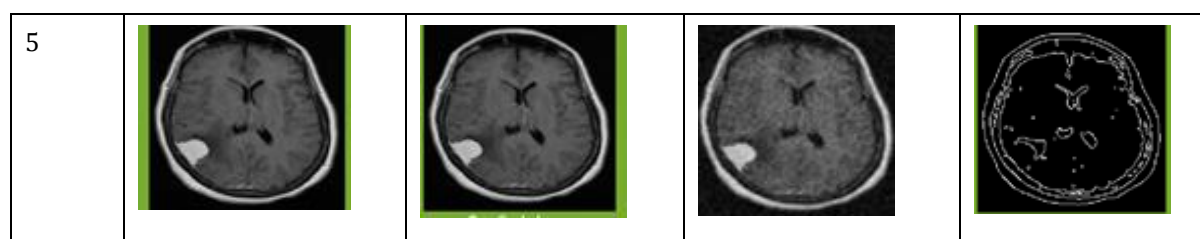


Figure 3: Brain MRI image with edge detected using canny edge detector

#### IV. CONCLUSION

Automatic brain tumor detection and classification is still a challenging task due to various factors. The brain MRI based tumor identification and grade classification method has been proposed in this paper. The initial pre-processing has been done with the help of gaussian filter. Now the pre-processed input MRI is gives to the canny edge detector to detect the edge of the tumor and segmentation is done by using K-means clustering algorithm. The key features extracted from segmented MRI using GLCM and DWT. The features are reduced with the help of PCA. Now the PCA output has been given as input to the SVM classifier. The classification of tumor into benign or malignant has performed using kernel based SVM classification.. The proposed system was implemented using MATLAB 2016b. The use of SVM along with the appropriate kernel techniques can help in achieving high accuracy. Further work will be carried out classification by using KSVM and Will implement our proposed result step by step using GUI window.

#### REFERENCES

- 1) Wen, P. Y., Macdonald, D. R., Reardon, D. A., Cloughesy, T. F., Sorensen, A. G., Galanis, E., ... & Chang, S. M. (2010). Updated response assessment criteria for high-grade gliomas: response assessment in neuro-oncology working group. *Journal of clinical oncology*, 28(11), 1963-1972.
- 2) Liang, Z. P., & Lauterbur, P. C. (2000). *Principles of magnetic resonance imaging* (pp. 1-7). Bellingham: SPIE Optical Engineering Press.
- 3) Rinck, P. "Magnetic resonance: a critical peer-reviewed introduction." *Magnetic resonance in medicine. The basic textbook of the European magnetic resonance forum*. Germany: BoD, 2014.
- 4) Logothetis, Nikos K., et al. "Neurophysiological investigation of the basis of the fMRI signal." *nature* 412.6843 (2001): 150-157.
- 5) Langleben, Daniel D., and Jane Campbell Moriarty. "Using brain imaging for lie detection: Where science, law, and policy collide." *Psychology, Public Policy, and Law* 19.2 (2013): 222.
- 6) Bailey, D. L., Maisey, M. N., Townsend, D. W., & Valk, P. E. (2005). *Positron emission tomography* (Vol. 2, p. 22). London: Springer.
- 7) Scuffham, J. W., Wilson, M. D., Seller, P., Veale, M. C., Sellin, P. J., Jacques, S. D. M., & Cernik, R. J. (2012). A CdTe detector for hyperspectral SPECT imaging. *Journal of Instrumentation*, 7(08), P08027.
- 8) Zhang J, Traylor KS, Mountz JM. PET and SPECT imaging of brain tumors. *Seminars in Ultrasound, CT and MRI*. 2020;41(6):530-540
- 9) Suchorska B, Tonn JC, Jansen NL "PET imaging for brain tumor diagnostics. *Current Opinion in Neurology*. 2014;27(6):683-688.
- 10) Foster-Gareau, Paula, et al. "Imaging single mammalian cells with a 1.5 T clinical MRI scanner." *Magnetic Resonance in Medicine: An Official Journal of the International Society for Magnetic Resonance in Medicine* 49.5 (2003): 968-971.
- 11) De Leeuw, F. E., et al. "Prevalence of cerebral white matter lesions in elderly people: a population based magnetic resonance imaging study. The Rotterdam Scan Study." *Journal of Neurology, Neurosurgery & Psychiatry* 70.1 (2001): 9-14.
- 12) Jayadevappa, D., S. Srinivas Kumar, and D. S. Murty. "Medical image segmentation

- algorithms using deformable models: a review." *IETE Technical review* 28, no. 3, p p 248-255, 2011.
- 13) Islam, Atiq, Syed MS Reza, and Khan M. Iftekhharuddin. "Multifractal texture estimation for detection and segmentation of brain tumors." *IEEE transactions on biomedical engineering* 60, no. 11, p p 3204-3215, 2013.
- 14) Nimeesha, K. M., and Rajaram M. Gowda. "Brain tumour segmentation using Kmeans and fuzzy c-means clustering algorithm." *Int J Comput Sci Inf Technol Res Excell* 3 (2013): 60-65. DOI: 10.13140/RG.2.1.3961.5841
- 15) Arakeri, Megha P., and G. Ram Mohana Reddy. "Computer-aided diagnosis system for tissue characterization of brain tumor on magnetic resonance images." *Signal, Image and Video Processing* VOL.9, no. 2, p.p 409-425, 2013 IEEE.
- 16) Sundararaj, G. Kharmega, and V. Balamurugan. "Robust classification of primary brain tumor in Computer Tomography images using K-NN and linear SVM." In *2014 International Conference on Contemporary Computing and Informatics (IC3I)*, p p. 1315-1319. IEEE, 2014.
- 17) Yazdani, Sepideh, Rubiyah Yusof, Alireza Karimian, Mohsen Pashna, and Amirshahram Hematian. "Image segmentation methods and applications in MRI brain images." *IETE Technical Review* vol. 32, no. 6, p.p 413-427, 2015 IEEE.
- 18) Bangare, Sunil L., Madhura Patil, Pallavi S. Bangare, and S. T. Patil. "Implementing tumor detection and area calculation in MRI image of human brain using image processing techniques." *Int. Journal of Engineering Research and Applications* 5, no. 4 (2015): 60-65
- 19) Kohler, Betsy A., et al. "Annual report to the nation on the status of cancer, 1975–2007, featuring tumors of the brain and other nervous system." *Journal of the national cancer institute* 103.9 (2011): 714-736.
- 20) Zhang, M., & Gunturk, B. K. (2008). Multiresolution bilateral filtering for image denoising. *IEEE Transactions on image processing*, 17(12), 2324-2333.
- 21) Wang, T., & Li, X. (2011, July). An efficient impulse noise reduction algorithm. In *2011 International Conference on Multimedia Technology* (pp. 164-167). IEEE.
- 22) Jain, N., & Karaulia, D. S. (2014). A comparative analysis of Filters on Brain MRI Images. *International Journal of Advanced Research in Computer Science and Software Engineering*, 4(11).
- 23) Sulaiman, Siti Noraini, et al. "De-noising of noisy MRI brain image using the switching-based clustering algorithm." *2014 IEEE International Conference on Control System, Computing and Engineering (ICCSCE 2014)*. IEEE, 2014.
- 24) Lin, L., Meng, X., & Liang, X. (2013, October). Reduction of impulse noise in MRI images using block-based adaptive median filter. In *2013 IEEE International Conference on Medical Imaging Physics and Engineering* (pp. 132-134). IEEE.
- 25) Vega, A T, VeronicaGarcia-perez, Santiago Aja-Fernandez, and Carl-fredrik Westin, "efficient and robust denoising of magnetic resonance brain images based on wavelet base nonlocal means algorithm", *The International Journal Of Engineering And Science(IJES)*, 2014, pp.84-89.
- 26) Jain, A., Mishra, S., & Richariya, V. (2014). Impulse Noise Removal using Fuzzy Switching Median Filter. *International Journal of Scientific & Engineering Research*, 5(4), 1610-1619.
- 27) Isa, Iza Sazanita, Siti Noraini Sulaiman, Muzaimi Mustapha, and Sailudin Darus. "Evaluating denoising performances of fundamental filters for T2-weighted MRI images." *Procedia Computer Science* 60 (2015): 760-768.
- 28) Anisha, S. R., Scholar, P. G., & Krishnan, D. J. V. (2015). Comparison of various filters for noise removal in MRI brain image. In *International Conference on Futuristic Trends in Computing and Communication (ICFTCC-2015)*, pp 68-73.
- 29) Ali, H. M. MRI Medical Image Denoising by Fundamental Filters. *SCIREA Journal of Computer*, 2017, 12-26.
- 30) Rashid, M. H. O., Mamun, M. A., Hossain, M. A., & Uddin, M. P. (2018, February). Brain tumor detection using anisotropic filtering, SVM classifier and morphological operation from MR images. In *2018 international*

- conference on computer, communication, chemical, material and electronic engineering (IC4ME2) (pp. 1-4). IEEE.
- 31) Hemanth, G., Janardhan, M., & Sujihelen, L. (2019, April). Design and implementing brain tumor detection using machine learning approach. In *2019 3rd international conference on trends in electronics and informatics (ICOEI)* (pp. 1289-1294). IEEE.
  - 32) Kumar, S., Abid, I., Garg, S., Singh, A. K., & Jain, V. (2019). Brain Tumor Detection using Image Processing. *International Journal of Information Sciences and Application (IJISA)*, 11(1).
  - 33) Zhang, C., Shen, X., Cheng, H., & Qian, Q. (2019). Brain tumor segmentation based on hybrid clustering and morphological operations. *International journal of biomedical imaging*, 2019.
  - 34) Kiraz, H. (2021). Design and implementation of image processing method on brain tumor detection with machine learning approach.
  - 35) Doshi Jeel Alpeshkumar, Prof. Pinal J. Patel, Tirth Hitesh Shah "Brain Tumor Detection and Segmentation" GRADIVA REVIEW JOURNAL VOLUME 7 ISSUE 5 2021 ,ISSNO : 0363-8057,  
[athttps://www.researchgate.net/publication/352210377](https://www.researchgate.net/publication/352210377),pp 210-215.
  - 36) Toğaçar, Mesut, Zafer Cömert, and Burhan Ergen. "Classification of brain MRI using hyper column technique with convolutional neural network and feature selection method." *Expert Systems with Applications* 149, p p113274,2020.
  - 37) Gokulalakshmi, A., S. Karthik, N. Karthikeyan, and M. S. Kavitha. "ICM-BTD: improved classification model for brain tumor diagnosis using discrete wavelet transform-based feature extraction and SVM classifier." *Soft Computing*, p p 1-11,2020.
  - 38) Kalaiselvi, Thiruvenkadam, Thiagarajan Padmapriya, Padmanaban Sriramakrishnan, and Venugopal Priyadharshini. "Development of automatic glioma brain tumor detection system using deep convolutional neural networks." *International Journal of Imaging Systems and Technology* (2020).
  - 39) Kumar, D. Maruthi, D. Satyanarayana, and MN Giri Prasad. "MRI brain tumor detection using optimal possibilistic fuzzy C-means clustering algorithm and adaptive k-nearest neighbor classifier." *Journal of Ambient Intelligence and Humanized Computing*, p p 1-14,2020.
  - 40) Amarapur, Basavaraj. "Computer-aided diagnosis applied to MRI images of brain tumor using cognition based modified level set and optimized ANN classifier." *Multimedia Tools and Applications* 79, no. 5, 3571-3599,2020.
  - 41) Bhandari, A., Koppen, J. & Agzarian, M. Convolutional neural networks for brain tumour segmentation. *Insights Imaging* 11, 77 (2020).  
<https://doi.org/10.1186/s13244-020-00869-4>
  - 42) Abd Alreda, Ban Mohammed, and Thamir Rashed Saeid Hussain Kareem Khalif. "Automated Brain Tumor Detection Based on Feature Extraction from The MRI Brain Image Analysis." *Iraqi Journal For Electrical and Electronics Engineering (IJEED)*, (2020): 1-9.
  - 43) SivaSai, Jalluri Gnana, P. Naga Srinivasu, Munjila Naga Sindhuri, Kola Rohitha, and Sreesailam Deepika. "An Automated Segmentation of Brain MR Image Through Fuzzy Recurrent Neural Network." In *Bio-inspired Neurocomputing*, pp. 163-179. Springer, Singapore,2021.
  - 44) Vankdothu, Ramdas, and Mohd Abdul Hameed. "Brain tumor MRI images identification and classification based on the recurrent convolutional neural network." *Measurement: Sensors* 24 (2022): 100412.
  - 45) Rafael , Gonzalez,Richard E, Woods,Steven L. Eddins "Digital image processing using MATLAB," Chapter 10,pp.378-425,Pearson Education,2004.
  - 46) Dr. Padmaja V K, S Jayanth Srinivas, and S Lokesh, " IMAGE ENHANCEMENT USING GAUSSIAN FILTERS", International Research Journal of Engineering and Technology (IRJET), Volume: 07 Issue: 05 | May 2020